

**BCMEA**

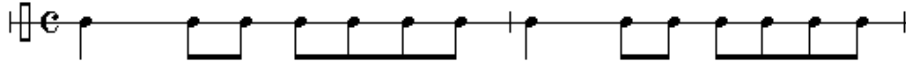
**7<sup>th</sup> and 8<sup>th</sup> Grade Wind and Percussion Audition Requirements (Page 1)**

**Major Scales**

1. Students must be prepared **to perform from memory** the following major scales:

*C, F, Bb, Eb, Ab, G, D*

2. All major scales will be performed using the following rhythm pattern:



3. The **minimum tempo** for the nine major scales is M.M. ♩ = 80. Students may perform scales at a faster tempo if they so choose provided the tempo is steady.
4. Students must be prepared to perform the major scales with **both a slurred and tongued articulation.**
5. The following OCTAVES for major scales will be required for the audition **with no variation.**

<b>Instrument</b>	<b>Octaves</b>	<b>C</b>	<b>F</b>	<b>Bb</b>	<b>Eb</b>	<b>Ab</b>	<b>G</b>	<b>D</b>
PICCOLO*	ONE	X		X		X		
	TWO		X		X		X	X
FLUTE**	ONE			X		X		
	TWO	X	X		X		X	X
OBOE***	ONE		X	X	X	X	X	
	TWO	X						X
Bb SOP. **** CLARINETS	ONE				X			
	TWO	X	X	X		X	X	X
LOW CLAR.	ONE	X	X	X	X	X	X	X
	BASSOON	ONE				X	X	
	TWO	X	X	X	X			X
	ALL SAXES	ONE				X	X	
	TWO	X	X	X	X			X
	TRUMPET	ONE	X	X	X	X		X
TWO						X	X	
BAR. T.C.	ONE	X	X	X	X			X
	TWO					X	X	
TROMBONE	ONE	X		X	X	X		X
	BAR. B.C.	TWO		X			X	
*****								
TUBA*****	ONE	X	X	X	X	X	X	X
MALLETS	TWO	X	X	X	X	X	X	X
F. HORN	ONE	X		X		X		X
	TWO		X		X		X	



- French Horn Starting Pitches

**MORE INFORMATION ON STARTING PITCHES ON PAGE 2**

## 7th and 8<sup>th</sup> Grade Wind and Percussion Audition Requirements (Page 2)

\* Piccolos should start on the lowest possible note for all scales.

\*\* Flutes should start on the C below the staff for the C major scale.

\*\*\* Oboes should start the Bb Scale on third line Bb.

\*\*\*\* All soprano clarinets should begin their scales on the lowest possible tonic note.

\*\*\*\*\* All trombones and bass clef baritones should begin their scales on the lowest possible tonic note

\*\*\*\*\* All tubas should start their scales on the lowest possible tonic note except for F major.

### Chromatic Scales

1. Students must be prepared to perform from memory the listed chromatic scales.
2. All chromatic scales will be performed using the following rhythmic pattern.



3. The minimum tempo for the chromatic scales is MM. ♩ = 80. Students may perform scales at a faster tempo if they so choose provided the tempo is steady.
4. Students must be prepared to perform the chromatic scale with a slurred articulation. A breath may be taken between the ascending and descending scale.
5. The following OCTAVES will be required for the audition with no variation:

One Octave

Flute/ Piccolo: Starting on 3<sup>rd</sup> line Bb

Oboe: Starting on 2<sup>nd</sup> line G

Bassoon: Starting on F below the staff

Eb/Bb Sop. Clarinet: Starting on C below the staff

Low Clarinets: Starting on E below the staff

All Saxophones: Starting on 2<sup>nd</sup> line G

French Horn: Starting on C below the treble clef staff not low C in Bass Clef

Trumpet & T.C. Baritone: C-C

Trombone & B.C. Baritone: Bb-Bb

Tuba: Bb-Bb

Mallets: C-C

### 7<sup>th</sup> and 8<sup>th</sup> Grade Wind and Percussion Audition Requirements

1. Snare drum students will be responsible for the 9 rudiments from the Percussive Arts Society in lieu of scales.  
(Please see the enclosed chart)
2. All Rudiments will be performed open (slow) to closed (fast).
3. Timpani students will be auditioned on a three drum set up. Students may use a pitch pipe or mallet instrument to find the correct pitches.  
Scoring Breakdown  
**SCALES: 25 %** of the total score.  
**SIGHTREADING: 25 %** of the total score.  
**SOLO: 50 %** of the total score.

**NOTE: THE USE OF XEROX COPIES AT THE AUDITION IS PROHIBITED**